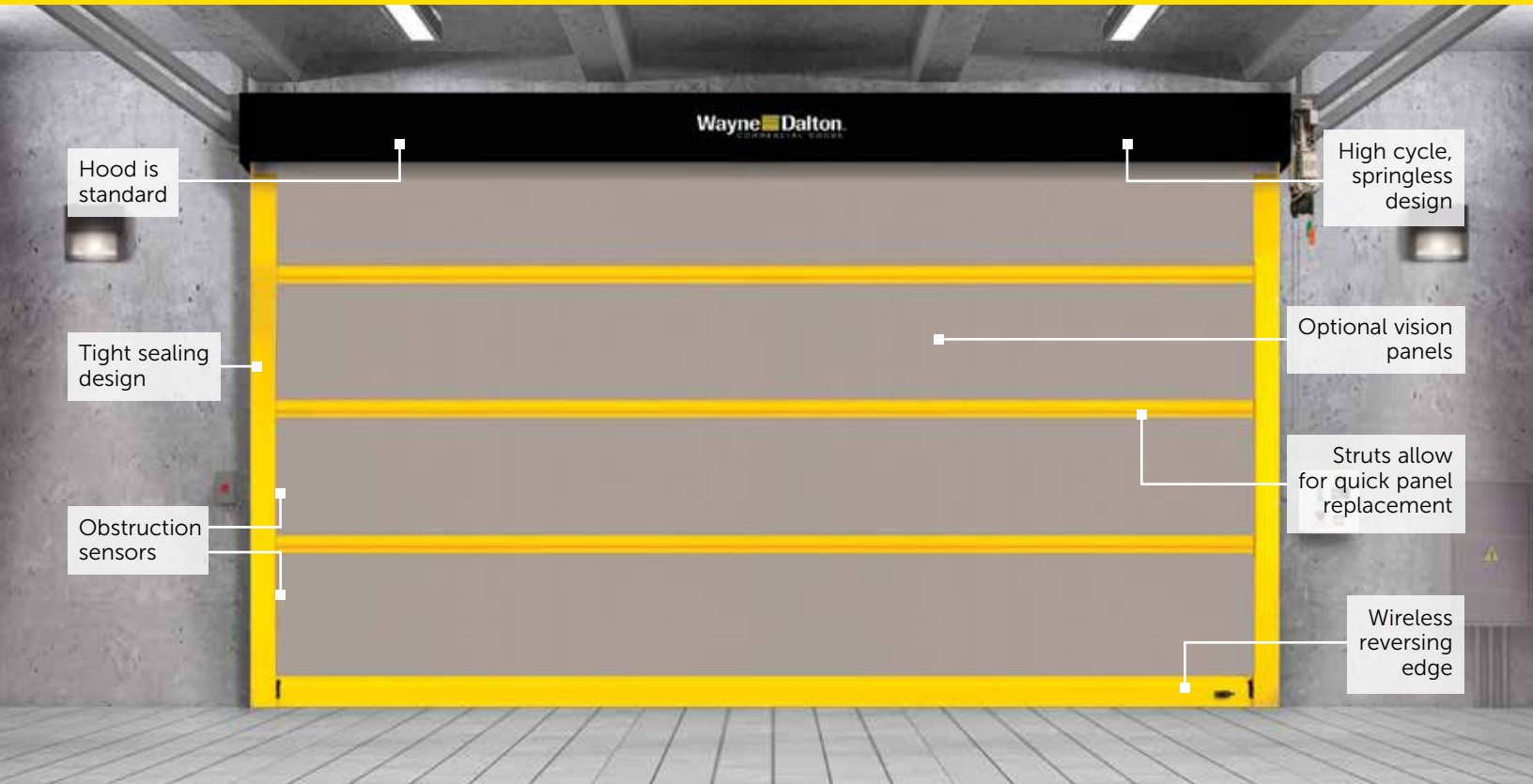


MODEL 882 ADV-XTREME

INTERIOR HIGH SPEED, HIGH PERFORMANCE FABRIC DOOR



Low maintenance and built to last

HIGH PERFORMANCE, LOW MAINTENANCE DESIGN

- Strutted design allows for quick section replacement while reducing curtain deflection under pressure
- Springless design requires minimal interruption for maintenance
- Direct-mounted gear drive minimizes wear and tear
- Variable frequency drive eliminates sudden jolts from door start/stop
- Patent-pending breakaway system design with impact detection and push button self-repair

INSTALLER FRIENDLY

- Pre-assembled sub-assemblies for easier installation
- Plug and play wiring reduces need for licensed electrician

APPLICATIONS

- Manufacturing/Heavy Manufacturing
- Warehouse/Distribution
- Food and Beverage
- Cold Storage



MODELS 882 ADV-XTREME

INTERIOR HIGH SPEED, HIGH PERFORMANCE FABRIC DOOR

STANDARD FEATURES OVERVIEW

CONSTRUCTION

OPENINGS	Interior/Interior
MAX HEIGHT	15'
MAX WIDTH	16'
MAX OPENING SPEED	Up to 65" per second
MAX CLOSING SPEED	Up to 40" per second
BREAK AWAY SELF RESET	Yes
WIND LOAD*	Up to 4.0 psf
WIND STRUT	2" strut standard
CURTAIN MATERIAL	2 layers of PVC-coated polyester with 1 layer of polyester weave
VISION	20" high windows spaced evenly across width of door
OPERATION	Direct drive motor and gearbox system with a door stop safety device
CONTROL PANEL	Variable frequency drive NEMA 4X cULus listed; Onboard self diagnostic and service reminder; Built-in padlockable field disconnect
OBSTRUCTION SAFETY DETECTION	Infrared sensors mounted in-plane to the door curtain at 18" and 50" - 54" from floor (requires transformer)
REVERSING SAFETY EDGE	Wireless reversing edge
AVAILABLE SUPPLY VOLTAGES	208-245V AC 3PH/60Hz; 440-480V AC 3PH/60Hz, 575V AC 3PH/60Hz (requires transformer)
HINGED GUIDES	Provide easy access for maintenance

*Wind load is the ultimate pressure tested at door width of 16'.

OPTIONS

- **20" high windows** – spaced evenly across width of door
- **Multiple actuation options** – push button, motion detector, radio control, key switch, pull switch, loop detector, treadle switch
- **Signaling devices** – red/green LED warning light, horn/strobe combination, rotating warning light
- **Stainless steel guides, hood, motor cover, and head plates**
- **Programmable LED Lighting Package** – 3' tall light bar with red, yellow, green lights

CURTAIN COLOR OPTIONS



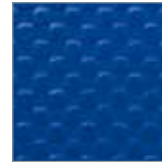
White



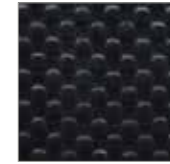
Gray



Red



Blue†



Black

†FDA/USDA Certified Fabric.

Other colors may be available. See your Wayne Dalton Dealer for details.

Actual colors may vary from brochure due to fluctuations in the printing process. Always request a color sample from your Wayne Dalton Dealer for accurate color matching.

Standard color for guides and bottom bar is yellow.

Approximately 200 optional RAL powder coat colors are also available.



Wayne Dalton
COMMERCIAL DOORS

2501 S. State Hwy. 121 Bus., Ste 200
Lewisville, TX 75067

wayne-dalton.com



© 2020 Wayne Dalton, a Division of Overhead Door Corporation. Consistent with our policy of continuing product improvement, we reserve the right to change product specifications without notice or obligation.
Item W900-1053 04/20