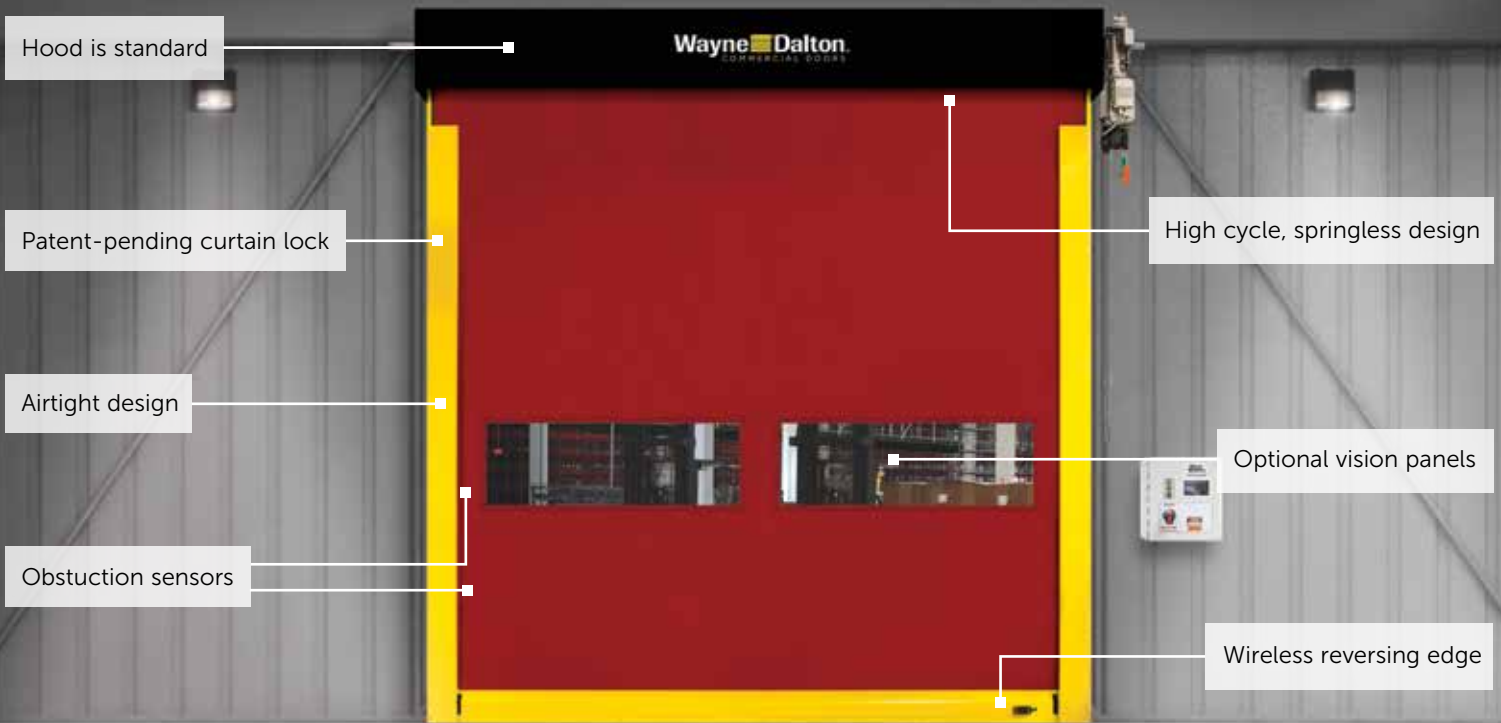


# MODEL 881 ADV-XTREME

INTERIOR HIGH SPEED, HIGH PERFORMANCE FABRIC DOOR



## Airtight design for environmentally controlled areas

### INDEPENDENTLY-TESTED AIRTIGHT DESIGN

- Prevents airborne contaminants from entering a controlled environment
- Reduces air exchange to no higher than .236 cfm/sf (ASTM E-283)

### HIGH PERFORMANCE DESIGN

- Strutless design lowers the operational noise of the door for quiet and smooth operation
- Springless design requires minimal interruption for maintenance
- Direct-mounted gear drive minimizes wear and tear
- Variable frequency drive eliminates sudden jolts from door start/stop

### FIELD REPAIRABLE

- Patent-pending breakaway system design with impact detection and push button self-repair
- Patent-pending curtain lock makes door easy to repair in the field

### INSTALLER FRIENDLY

- Pre-assembled sub-assemblies for easier installation
- Plug and play wiring reduces need for licensed electrician

### APPLICATIONS

- Manufacturing/Heavy Manufacturing
- Warehouse/Distribution
- Pharmaceutical
- Food and Beverage
- Cold Storage



# MODELS 881 ADV-XTREME

## INTERIOR HIGH SPEED, HIGH PERFORMANCE FABRIC DOOR

### STANDARD FEATURES OVERVIEW

#### CONSTRUCTION

<b>OPENINGS</b>	Interior/Interior
<b>MAX HEIGHT</b>	14'
<b>MAX WIDTH</b>	14'
<b>MAX OPENING SPEED</b>	Up to 70" per second
<b>MAX CLOSING SPEED</b>	Up to 40" per second
<b>CERTIFIED AIR TIGHTNESS</b>	< 0.236 cfm/sq ft (independently tested to ASTM E283 standard)
<b>BREAK-AWAY SELF RESET</b>	Yes
<b>WIND LOAD*</b>	Up to 7.5 psf
<b>CURTAIN MATERIAL</b>	2 layers of PVC-coated polyester with 1 layer of polyester weave
<b>CURTAIN LOCK</b>	Standard
<b>OPERATION</b>	Direct drive motor and gearbox system with a door stop safety device
<b>CONTROL PANEL</b>	Variable frequency drive NEMA 4X cULus listed; Onboard self diagnostic and service reminder; Built-in padlockable field disconnect
<b>OBSTRUCTION SAFETY DETECTION</b>	Infrared sensors mounted in-plane to the door curtain at 18" and 50" - 54" from floor
<b>REVERSING SAFETY EDGE**</b>	Wireless reversing edge
<b>AVAILABLE SUPPLY VOLTAGES***</b>	105-125V AC 1PH; 220-240V AC 1PH; 208-245V AC 3PH/60Hz; 575V AC 3PH/60Hz (requires transformer)
<b>HINGED GUIDES</b>	Provide easy access for maintenance

\*Wind load is the ultimate pressure tested at door width of 10'.

\*\*\*Single phase available up to 10'x10' doors.



Patent-pending curtain lock allows for easy field repairs

#### OPTIONS

- **20" high windows** – spaced evenly across width of door
- **Multiple actuation options** – push button, motion detector, radio control, key switch, pull switch, loop detector, treadle switch
- **Signaling devices** – red/green LED warning light, horn/strobe combination, rotating warning light
- **Stainless steel guides, hood, motor cover, and head plates**
- **Programmable LED Lighting Package** – 3' tall light bar with red, yellow, green lights

#### CURTAIN COLOR OPTIONS



White



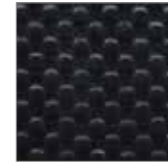
Gray



Red



Blue†



Black

†FDA/USDA Certified Fabric.

Other colors may be available. See your Wayne Dalton Dealer for details.

Actual colors may vary from brochure due to fluctuations in the printing process. Always request a color sample from your Wayne Dalton Dealer for accurate color matching.

Standard color for guides and bottom bar is yellow. Approximately 200 optional RAL powder coat colors are also available.



**Wayne Dalton**  
COMMERCIAL DOORS

2501 S. State Hwy. 121 Bus., Ste 200  
Lewisville, TX 75067

[wayne-dalton.com](http://wayne-dalton.com)



© 2020 Wayne Dalton, a Division of Overhead Door Corporation. Consistent with our policy of continuing product improvement, we reserve the right to change product specifications without notice or obligation.  
Item W900-1052 04/20